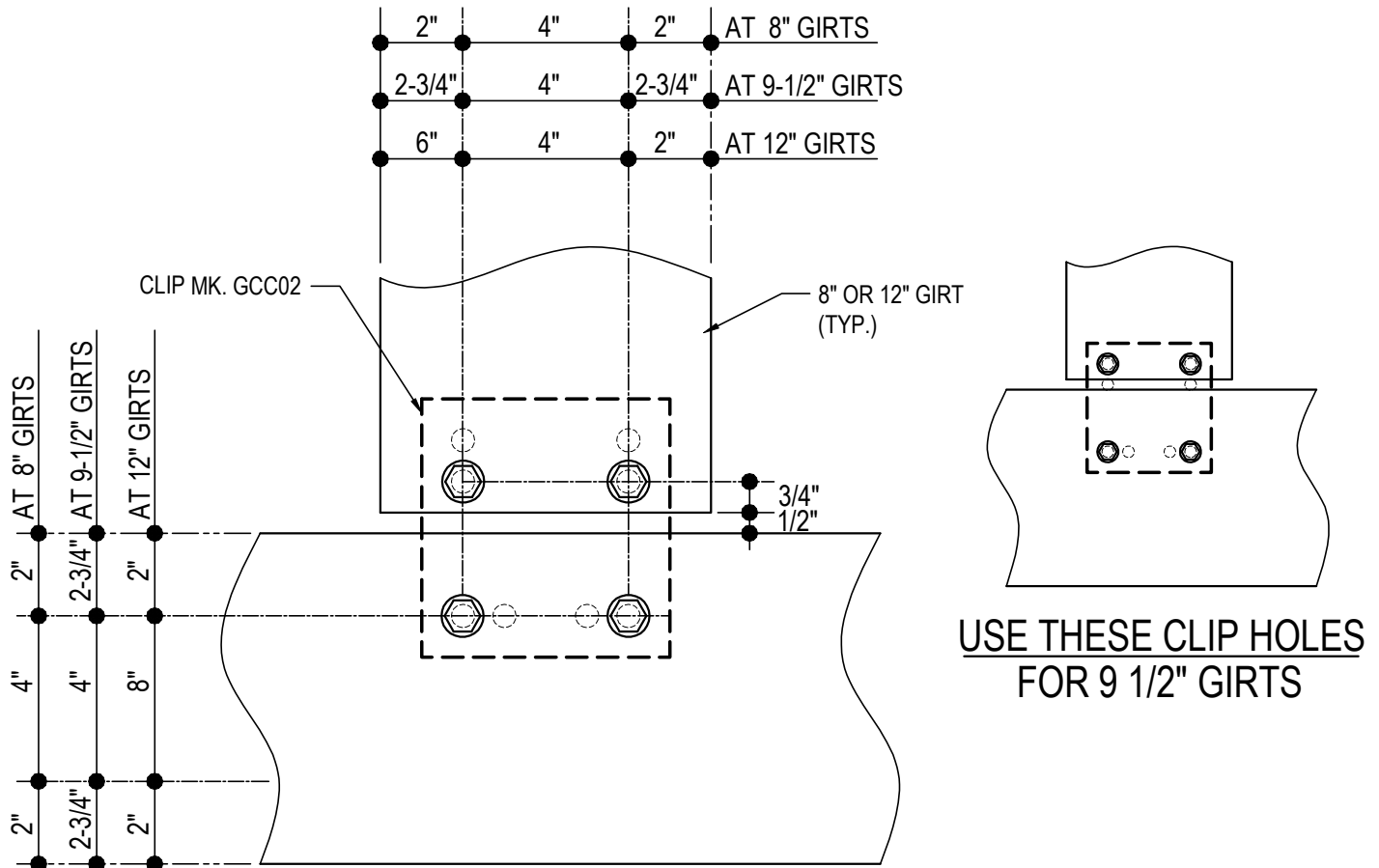


INSIDE CORNER GIRT CONNECTIONS

- CJ0005 - GIRT TO GIRT DETAIL
 - CJ1010 - FLUSH FRAMELINE WITH FLUSH GIRTS
 - CJ1020 - FLUSH FRAMELINE WITH FLUSH & INSET GIRTS
 - CJ1030 - BYPASS FRAMELINE 1-0 FLUSH GIRT
 - CJ1040 - BYPASS FRAMELINE 1-1.5 FLUSH GIRT
 - CJ1050 - BYPASS FRAMELINE 1-4 FLUSH GIRT
 - CJ1060 - BYPASS FRAMELINE WITH 8 & 9.5 GIRT
 - CJ1070 - INSET FRAMELINE WITH 8 & 9.5 INSET GIRT
 - CJ1080 - BYPASS FRAMELINE 1-0 INSET GIRT
 - CJ1090 - BYPASS FRAMELINE 1-1.5 INSET GIRT
 - CJ1100 - BYPASS FRAMELINE 1-4 INSET GIRT
 - CJ1110 - FLUSH FRAMELINE SIMPLE SPAN BYPASS GIRT
 - CJ1120 - INSET FRAMELINE WITH SIMPLE SPAN BYPASS GIRT
 - CJ1130 - BYPASS FRAMELINE WITH SIMPLE SPAN BYPASS GIRT
 - CJ1165 - HOT ROLLED GIRT INTO BYPASS GIRT
 - CJ1170 - BYPASS GIRT INTO BYPASS GIRT
 - CJ1220 - BYPASS GIRT INTO BYPASS GIRT
 - CJ1500 - 8 LAPPED BYPASS GIRT AT 8 INSIDE GIRT
 - CJ1520 - 8 LAPPED BYPASS GIRT AT 8 INSIDE GIRT
 - CJ1540 - 9.5 LAPPED BYPASS GIRT INTO 8 INSIDE GIRT
 - CJ1560 - 9.5 LAPPED BYPASS GIRT INTO 9.5 INSIDE GIRT
-

CJ0005 - GIRT TO GIRT DETAIL

[Download the DWG file by clicking here.](#)



GIRT TO GIRT DETAIL

GIRT TO GIRT CONNECTION DETAIL

NOTE: USE (4) 1/2" x 1 1/4" A307 BOLTS H0500/NUTS H0400

REFERENCE STANDARD WASHER DETAIL FOR TYPICAL WASHER REQUIREMENTS

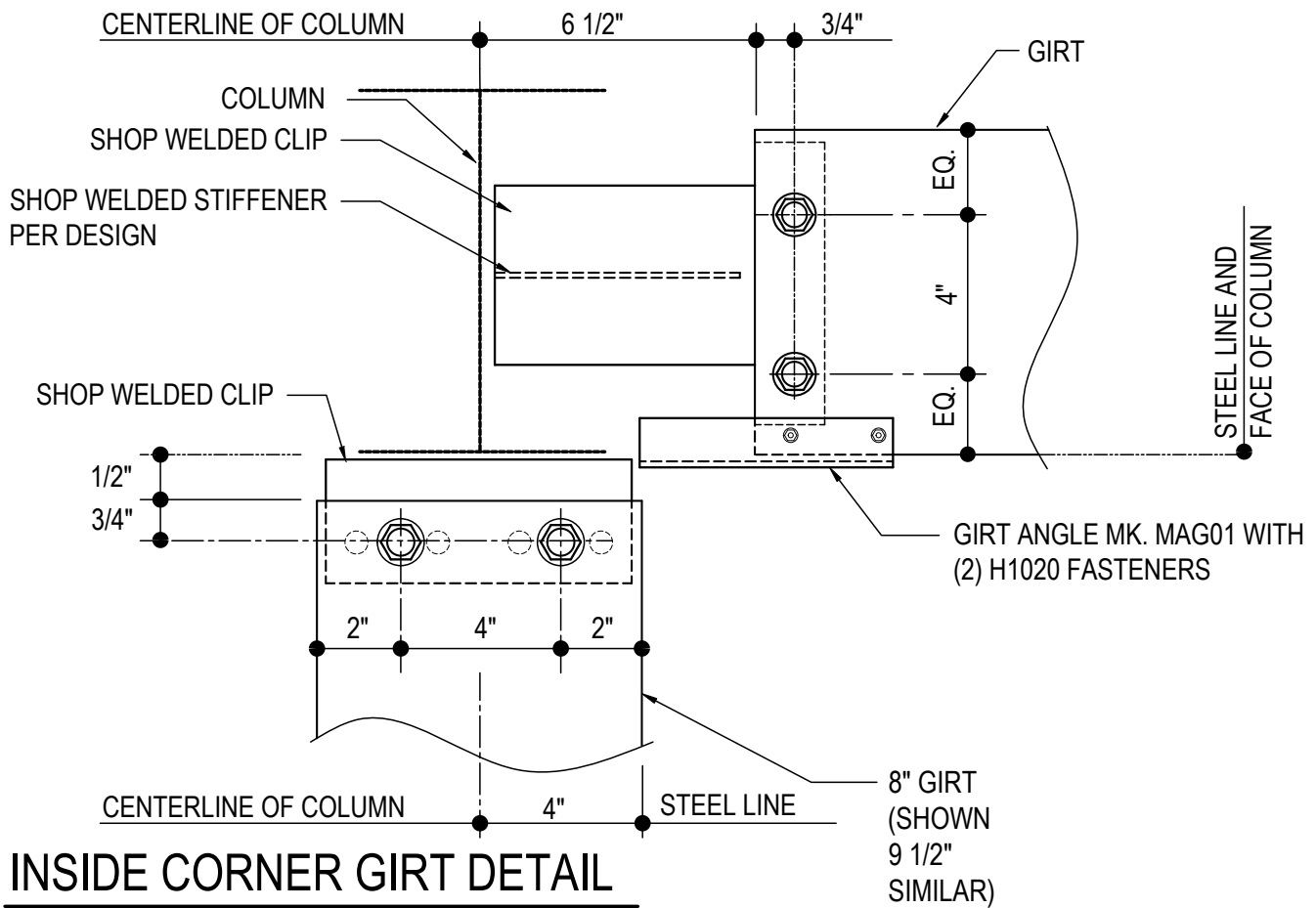
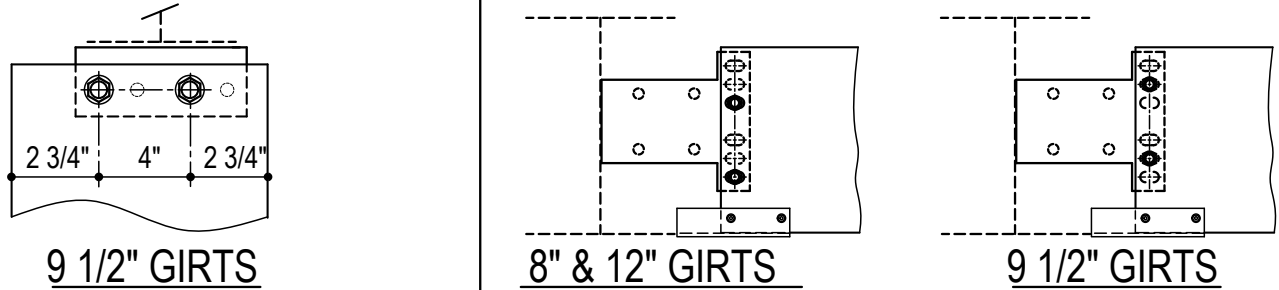
CJ0005

Detailer Notes:

- 1) N/A

CJ1010 - FLUSH FRAMELINE WITH FLUSH GIRTS

[Download the DWG file by clicking here.](#)



INSIDE CORNER GIRT DETAIL

FLUSH FRAMELINE WITH FLUSH GIRTS

NOTE: USE (4) 1/2" x 1 1/4" A307 BOLTS H0500/NUTS H0400

REFERENCE STANDARD WASHER DETAIL FOR TYPICAL WASHER REQUIREMENTS

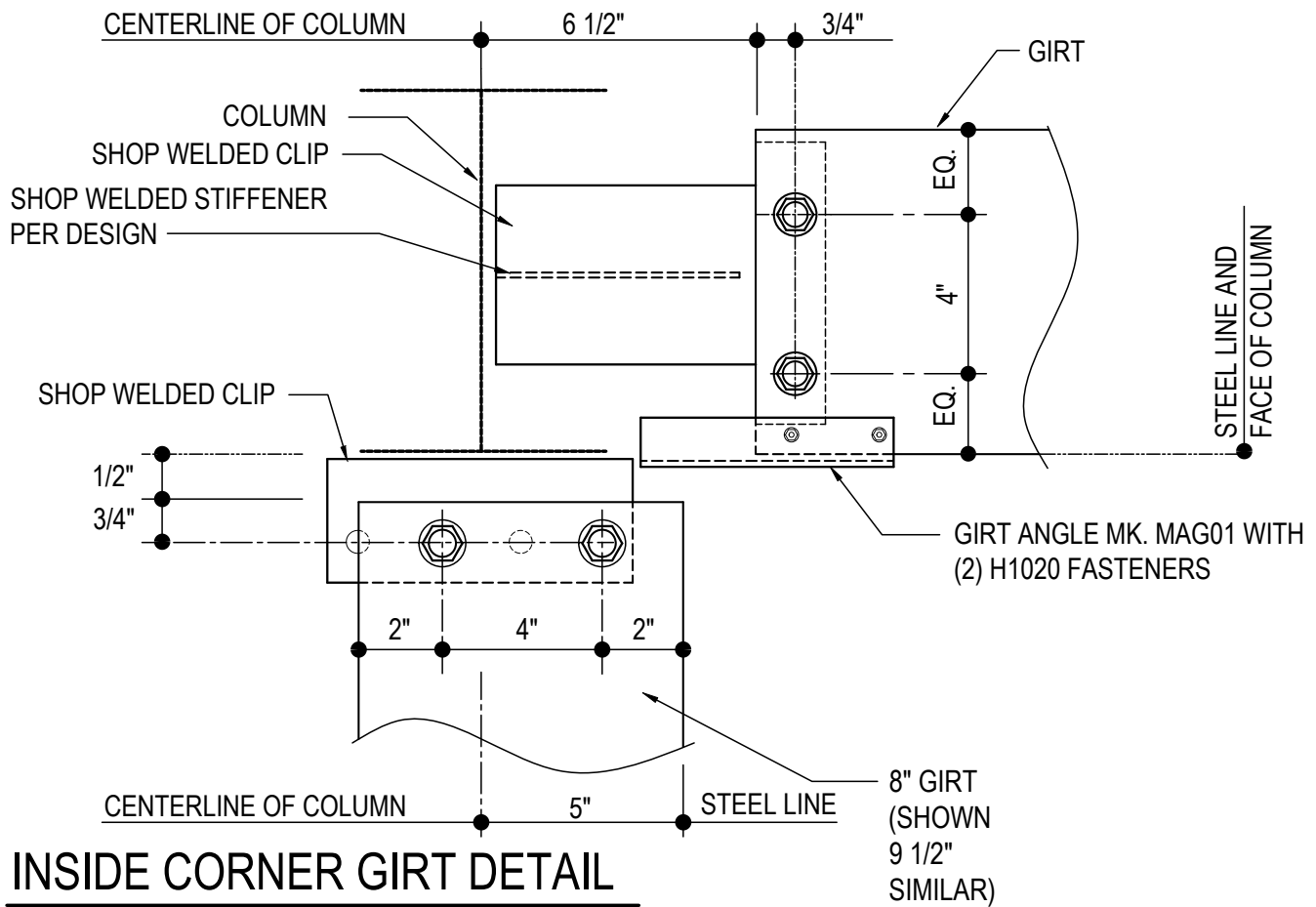
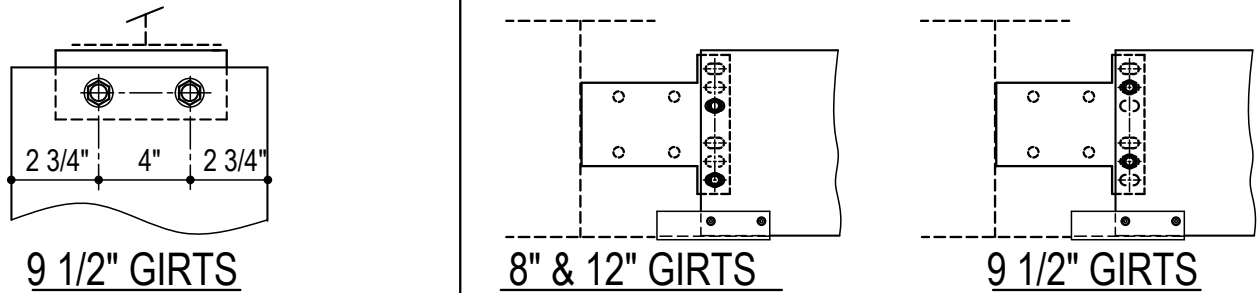
CJ1010

Detailer Notes:

- 1) WELDED "T" CLIP TO COLUMN: GFI02
- 2) (2) HOLE WELDED CLIP TO COLUMN FOR 8" GIRT: GRC03
- 3) (2) HOLE WELDED CLIP TO COLUMN FOR 9 1/2" GIRT: GRC09
- 4) ADD STIFFENER PER DESIGN TO WELDED "T" CLIP: WS_04

CJ1020 - FLUSH FRAMELINE WITH FLUSH & INSET GIRTS

[Download the DWG file by clicking here.](#)



INSIDE CORNER GIRT DETAIL

FLUSH FRAMELINE WITH FLUSH & INSET GIRTS

NOTE: USE (4) 1/2" x 1 1/4" A307 BOLTS H0500/NUTS H0400

REFERENCE STANDARD WASHER DETAIL FOR TYPICAL WASHER REQUIREMENTS

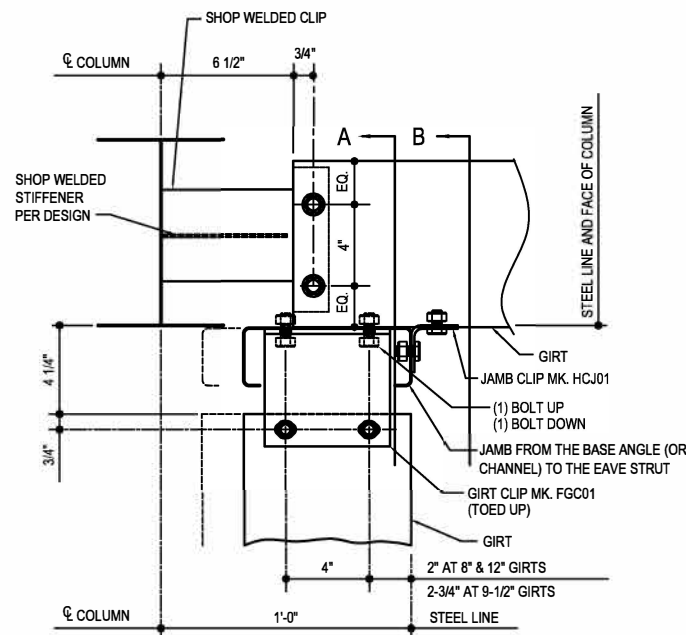
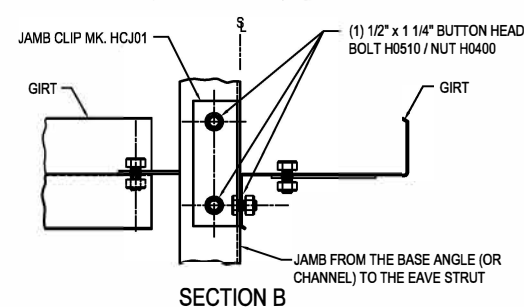
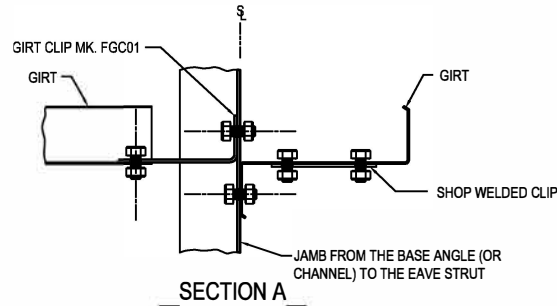
CJ1020

Detailer Notes:

- 1) WELDED "T" CLIP TO COLUMN: GFI02
- 2) (2) HOLE WELDED CLIP TO COLUMN FOR 8" GIRT: GRC09
- 3) (2) HOLE WELDED CLIP TO COLUMN FOR 9 1/2" GIRT: GRC03
- 4) ADD STIFFENER PER DESIGN TO WELDED "T" CLIP: WS_04

CJ1030 - BYPASS FRAMELINE (1'-0") WITH FLUSH GIRT

[Download the DWG file by clicking here.](#)



INSIDE CORNER GIRT DETAIL
 BYPASS FRAMELINE (1'-0") WITH FLUSH GIRT
 NOTE: USE (7) 1/2" x 1 1/4" A307 BOLTS H0500/NUTS H0400
 REFERENCE STANDARD WASHER DETAIL FOR TYPICAL WASHER REQUIREMENTS

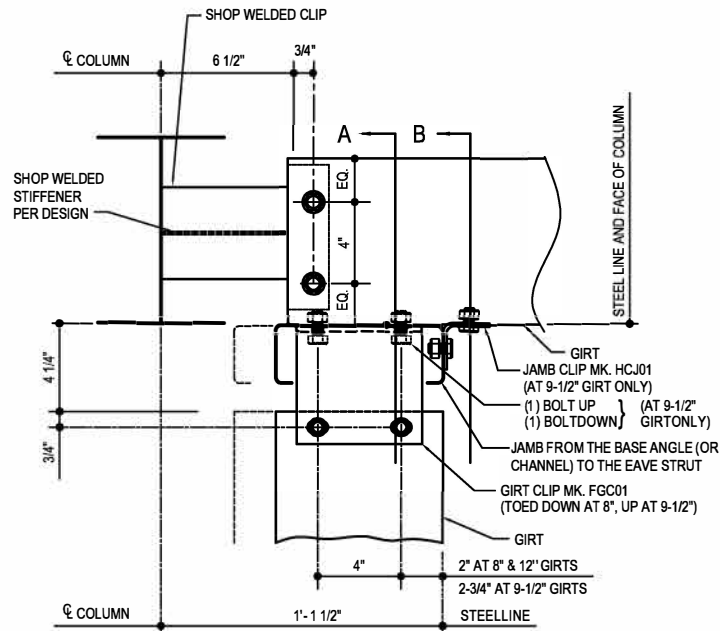
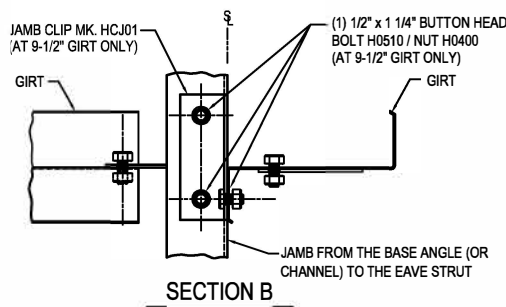
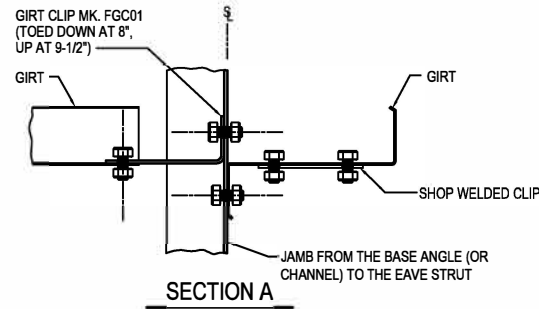
CJ1030

Detailer Notes:

- 1) WELDED CLIP TO COLUMN: GFI02
- 2) ADD STIFFENER PER DESIGN: WS_04

CJ1040 - BYPASS FRAMELINE (1'-1 1/2") WITH FLUSH GIRT

[Download the DWG file by clicking here.](#)



INSIDE CORNER GIRT DETAIL

BYPASS FRAMELINE (1'-1 1/2") WITH FLUSH GIRT
NOTE: USE (7) 1/2" x 1 1/4" A307 BOLTS H0500/NUTS H0400
REFERENCE STANDARD WASHER DETAIL FOR TYPICAL WASHER REQUIREMENTS

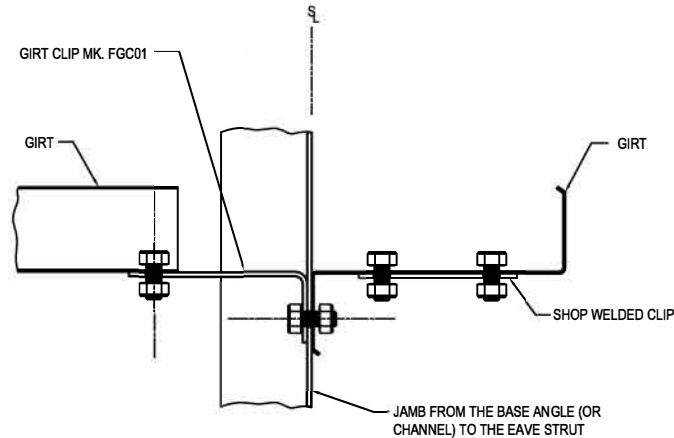
CJ1040

Detailer Notes:

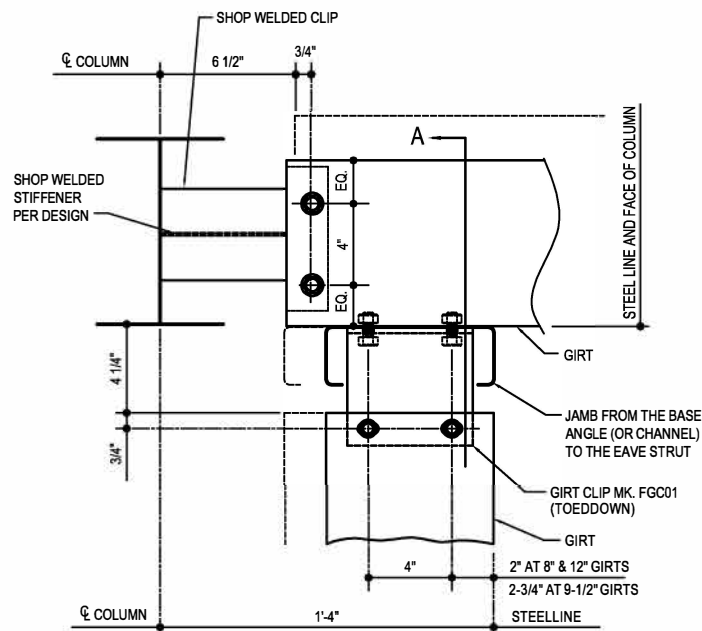
- 1) WELDED CLIP TO COLUMN: GFI02
- 2) ADD STIFFENER PER DESIGN: WS_04

CJ1050 - BYPASS FRAMELINE (1'-4") WITH FLUSH GIRT

[Download the DWG file by clicking here.](#)



SECTION A



INSIDE CORNER GIRT DETAIL

BYPASS FRAMELINE (1'-4") WITH FLUSH GIRT
NOTE: USE (6) 1/2" x 1 1/4" A307 BOLTS H0500/NUTS H0400
REFERENCE STANDARD WASHER DETAIL FOR TYPICAL WASHER REQUIREMENTS

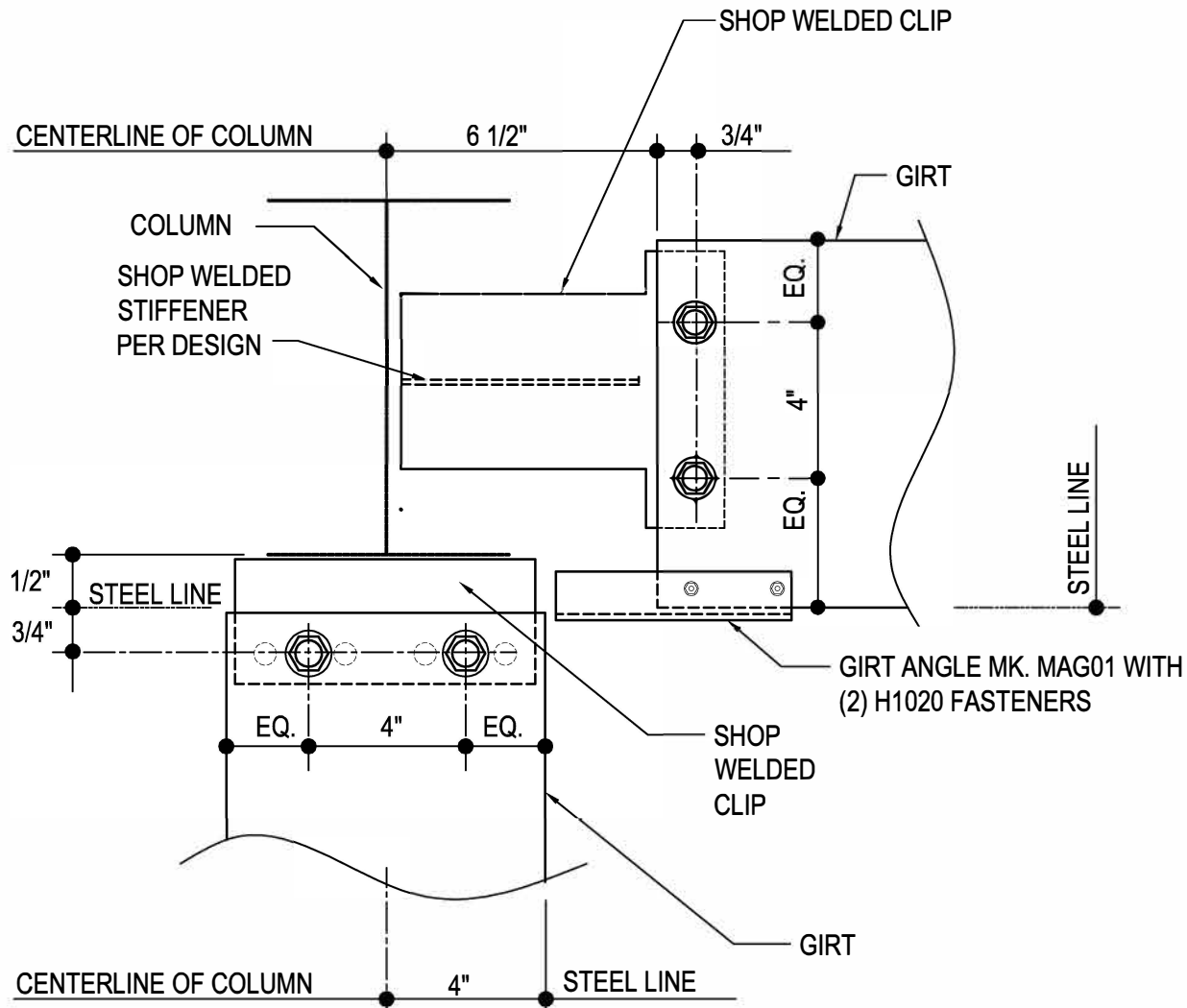
CJ1050

Detailer Notes:

- 1) WELDED CLIP TO COLUMN: GFI02
- 2) ADD STIFFENER PER DESIGN: WS_04

CJ1060 - FLUSH FRAMELINE WITH 8" & 9-1/2" INSET GIRT

[Download the DWG file by clicking here.](#)



INSIDE CORNER GIRT DETAIL

FLUSH FRAMELINE WITH 8" / 9-1/2" INSET GIRT

NOTE: USE (4) 1/2" x 1 1/4" A307 BOLTS H0500/NUTS H0400

REFERENCE STANDARD WASHER DETAIL FOR TYPICAL WASHER REQUIREMENTS

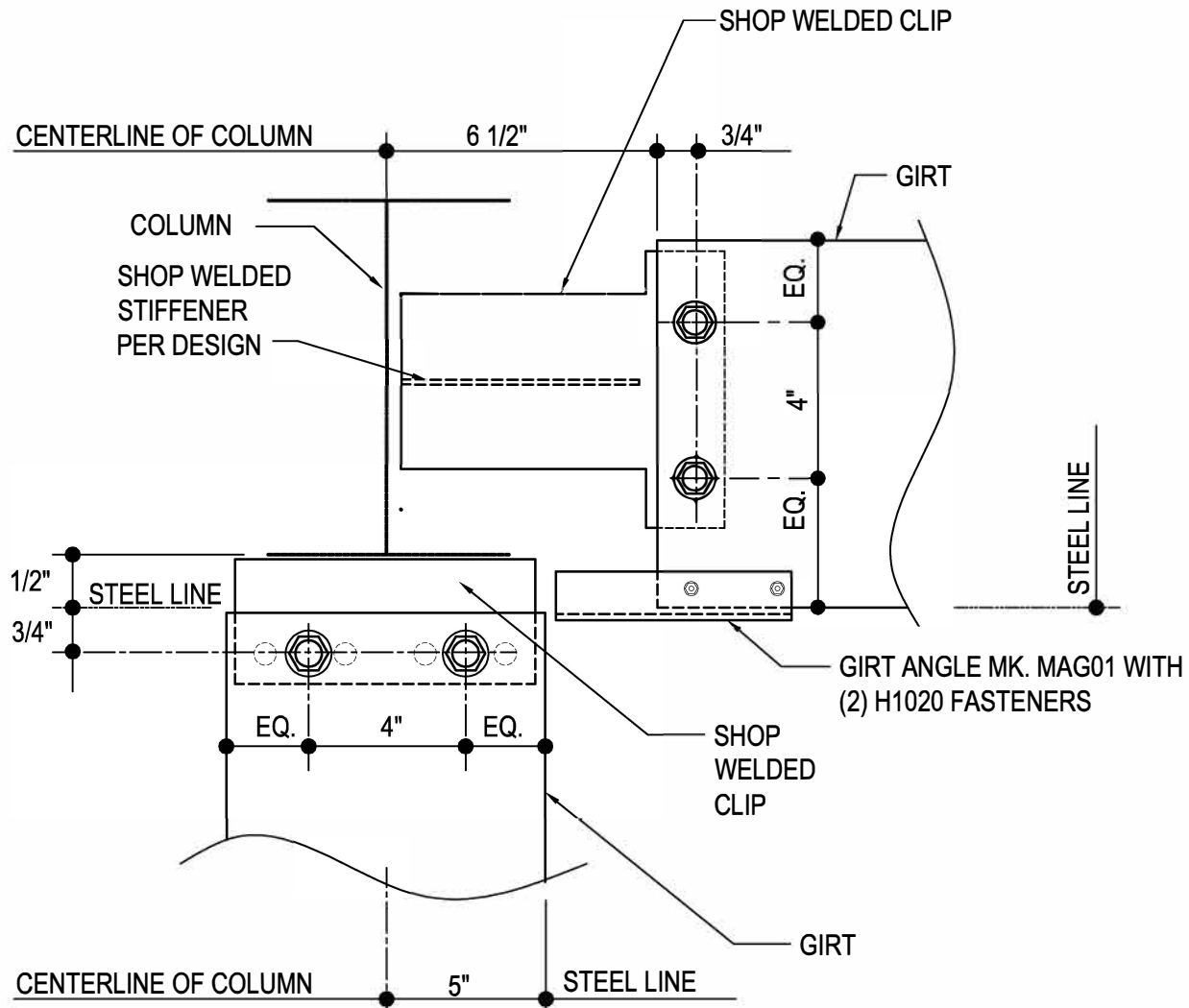
CJ1060

Detailer Notes:

- 1) T- CLIP WELDED TO COLUMN: GFI02
- 2) (2) HOLE WELDED CLIP 8" GIRT: GRC03
- 3) (2) HOLE WELDED CLIP 9 1/2" GIRT: GRC09
- 4) ADD STIFFENER TO T-CLIP PER DESIGN: WS_04

CJ1070 - INSET FRAMELINE WITH 8" & 9-1/2" INSET GIRT

[Download the DWG file by clicking here.](#)



INSIDE CORNER GIRT DETAIL

INSET FRAMELINE WITH 8" / 9-1/2" INSET GIRT

NOTE: USE (4) 1/2" x 1 1/4" A307 BOLTS H0500/NUTS H0400

REFERENCE STANDARD WASHER DETAIL FOR TYPICAL WASHER REQUIREMENTS

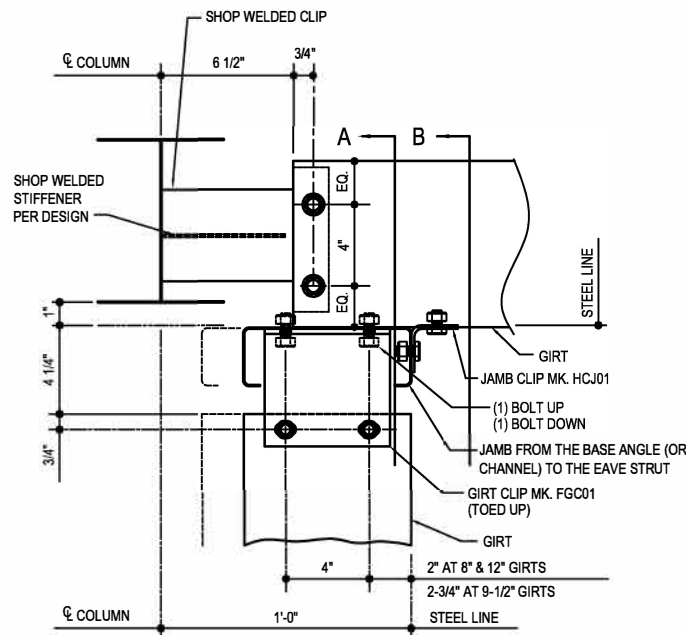
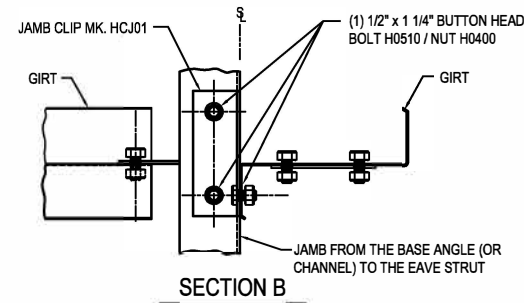
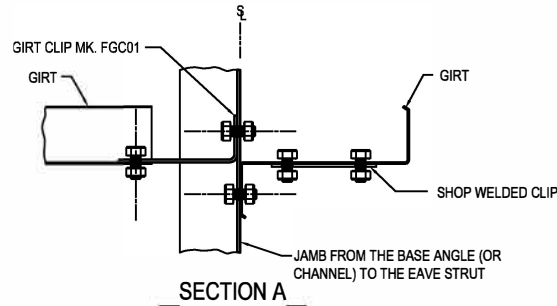
CJ1070

Detailer Notes:

- 1) T- CLIP WELDED TO COLUMN: GFI02
- 2) (2) HOLE WELDED CLIP 8" GIRT: GRC09
- 3) (2) HOLE WELDED CLIP 9 1/2" GIRT: GRC03
- 4) ADD STIFFENER TO T-CLIP PER DESIGN: WS_04

CJ1080 - BYPASS FRAMELINE (1'-0") WITH INSET GIRT

[Download the DWG file by clicking here.](#)



BYPASS FRAMELINE WITH INSET GIRT
NOTE: USE (7) 1/2" x 1 1/4" A307 BOLTS H0500/NUTS H0400
REFERENCE STANDARD WASHER DETAIL FOR TYPICAL WASHER REQUIREMENTS

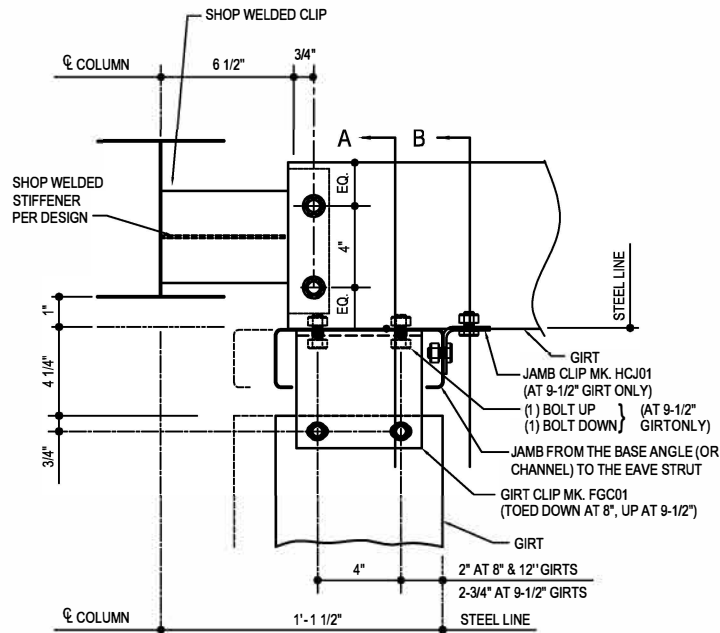
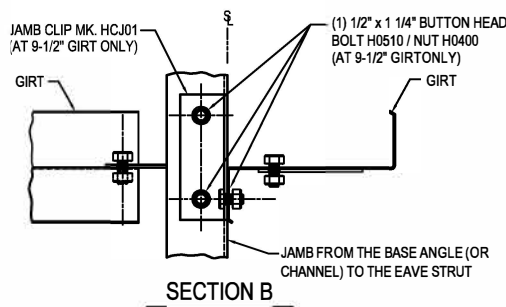
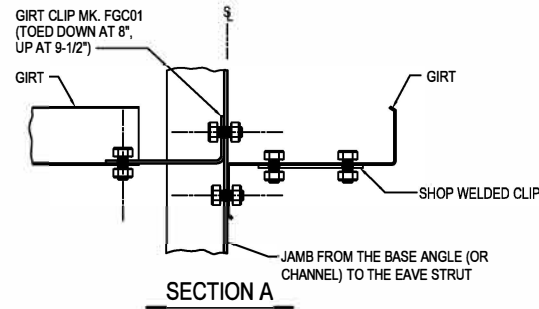
CJ1080

Detailer Notes:

- 1) WELDED CLIP TO COLUMN: GFI02
- 2) ADD STIFFENER PER DESIGN: WS_04

CJ1090 - BYPASS FRAMELINE (1'-1 1/2") WITH INSET GIRT

[Download the DWG file by clicking here.](#)



INSIDE CORNER GIRT DETAIL

BY PASS FRAMELINE (1'-1 1/2") WITH INSET GIRT
NOTE: USE (7) 1/2" x 1 1/4" A307 BOLTS H0500/NUTS H0400
REFERENCE STANDARD WASHER DETAIL FOR TYPICAL WASHER REQUIREMENTS

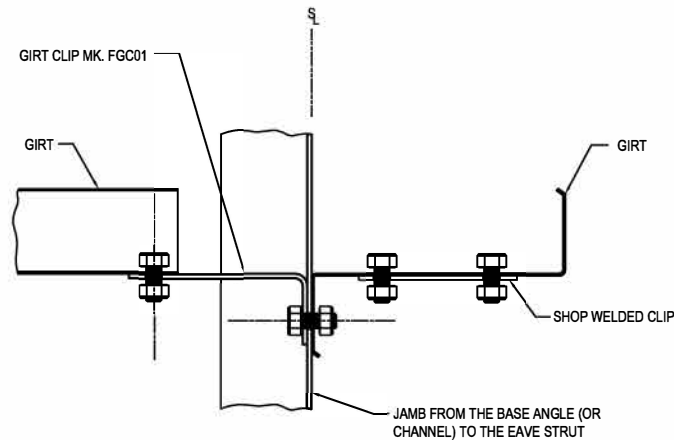
CJ1090

Detailer Notes:

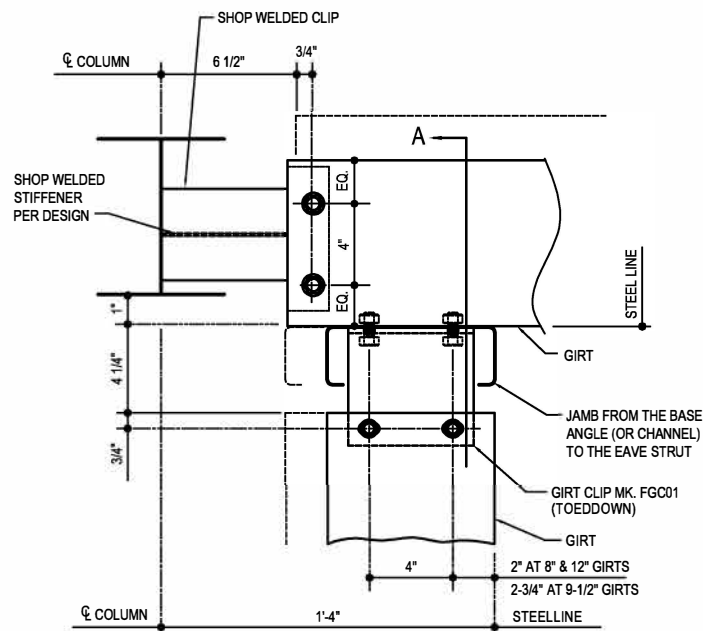
- 1) WELDED CLIP TO COLUMN: GFI02
- 2) ADD STIFFENER PER DESIGN: WS_04

CJ1100 - BYPASS FRAMELINE (1'-4") WITH INSET GIRT

[Download the DWG file by clicking here.](#)



SECTION A



INSIDE CORNER GIRT DETAIL

BYPASS FRAMELINE (1'-4") WITH INSET GIRT
NOTE: USE (6) 1/2" x 1 1/4" A307 BOLTS H0500/NUTS H0400
REFERENCE STANDARD WASHER DETAIL FOR TYPICAL WASHER REQUIREMENTS

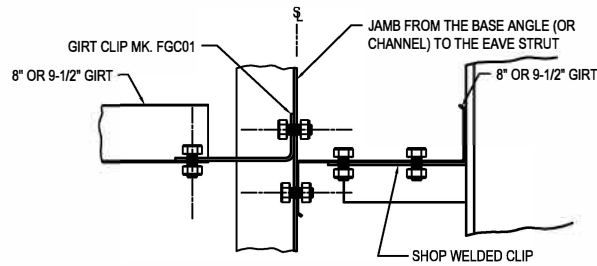
CJ1100

Detailer Notes:

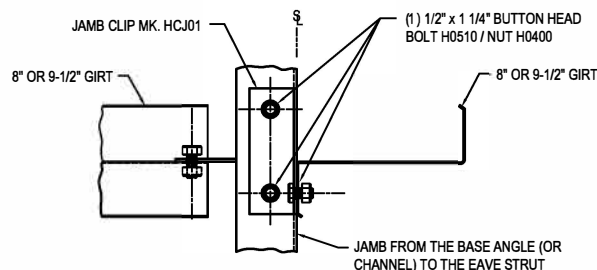
- 1) WELDED CLIP TO COLUMN: GFI02
- 2) ADD STIFFENER PER DESIGN: WS_04

CJ1110 - FLUSH FRAMELINE WITH SIMPLE SPAN BYPASS GIRT

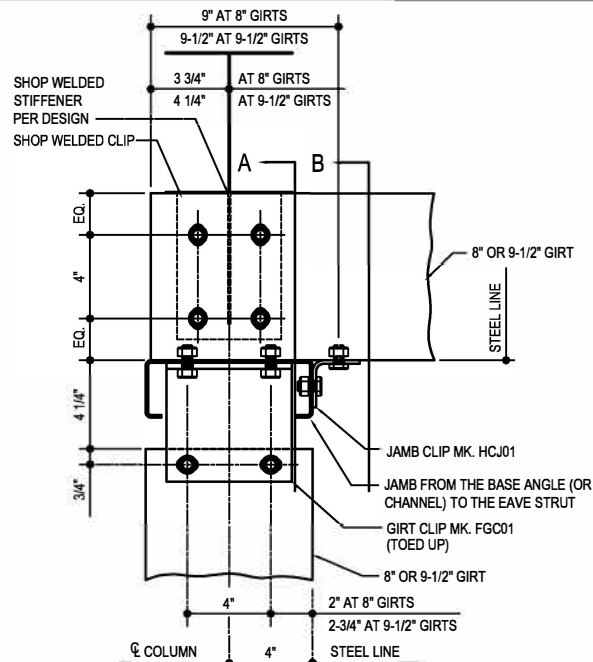
[Download the DWG file by clicking here.](#)



SECTION A



SECTION B



INSIDE CORNER GIRT DETAIL

FLUSH FRAMELINE WITH SIMPLE SPAN BYPASS GIRT
NOTE: USE (8) 1/2" x 1 1/4" A3 07 BOLTS H0500/NUTS H0400
REFERENCE STANDARD WASHER DETAIL FOR TYPICAL WASHER REQUIREMENTS

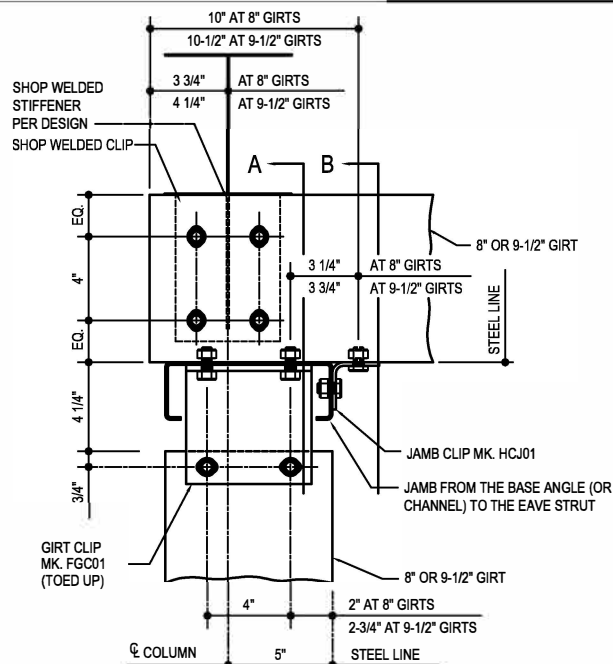
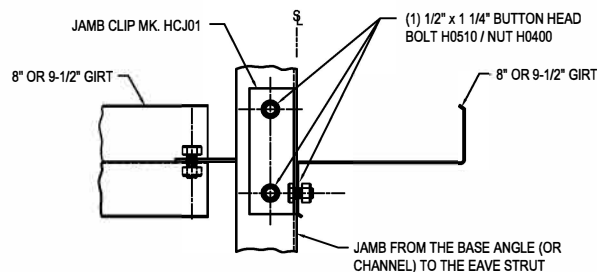
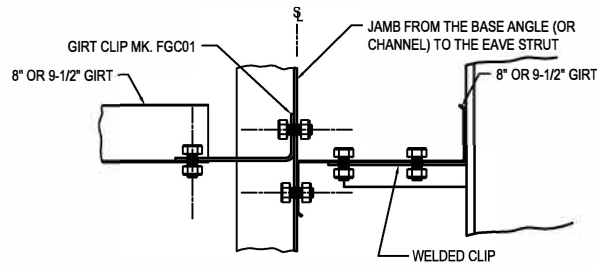
CJ1110

Detailer Notes:

- | | |
|---|---|
| 1) (4) HOLE WELDED CLIP TO COLUMN:
8" - PCU01
9 1/2" - GCB62
12" - GCB12 | 2) ADD STIFFENER PER DESIGN:
8" GIRT: WS_04
9 1/2" GIRT: WS_04
12" GIRT: WS_12 |
|---|---|

CJ1120 - INSET FRAMELINE WITH SIMPLE SPAN BYPASS GIRT

[Download the DWG file by clicking here.](#)



INSIDE CORNER GIRT DETAIL

INSET FRAMELINE WITH SIMPLE SPAN BYPASS GIRT
NOTE: USE (8) 1/2" x 1 1/4" A307 BOLTS H0500/NUTS H0400
REFERENCE STANDARD WASHER DETAIL FOR TYPICAL WASHER REQUIREMENTS

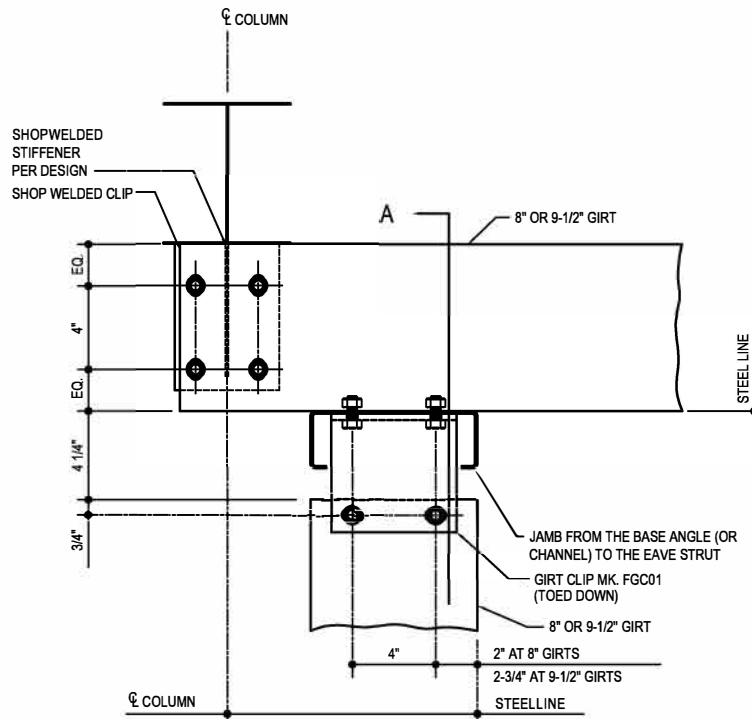
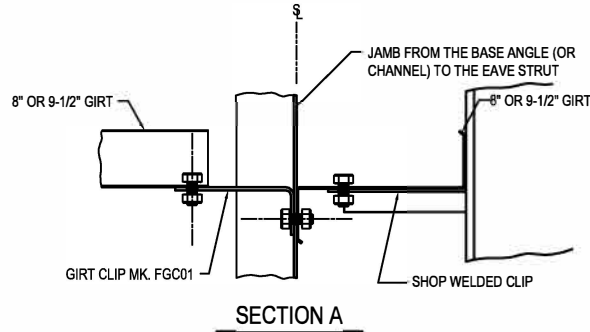
CJ1120

Detailer Notes:

- | | |
|---|---|
| 1) (4) HOLE WELDED CLIP TO COLUMN:
8" - PCU01
9 1/2" - GCB62
12" - GCB12 | 2) ADD STIFFENER PER DESIGN:
8" GIRT: WS_04
9 1/2" GIRT: WS_04
12" GIRT: WS_12 |
|---|---|

CJ1130 - BYPASS FRAMELINE WITH SIMPLE SPAN BYPASS GIRT

[Download the DWG file by clicking here.](#)



INSIDE CORNER GIRT DETAIL

BYPASS FRAMELINE WITH SIMPLE SPAN BYPASS GIRT
NOTE: USE (8) 1/2" x 1 1/4" A307 BOLTS H0500/NUTS H0400
REFERENCE STANDARD WASHER DETAIL FOR TYPICAL WASHER REQUIREMENTS

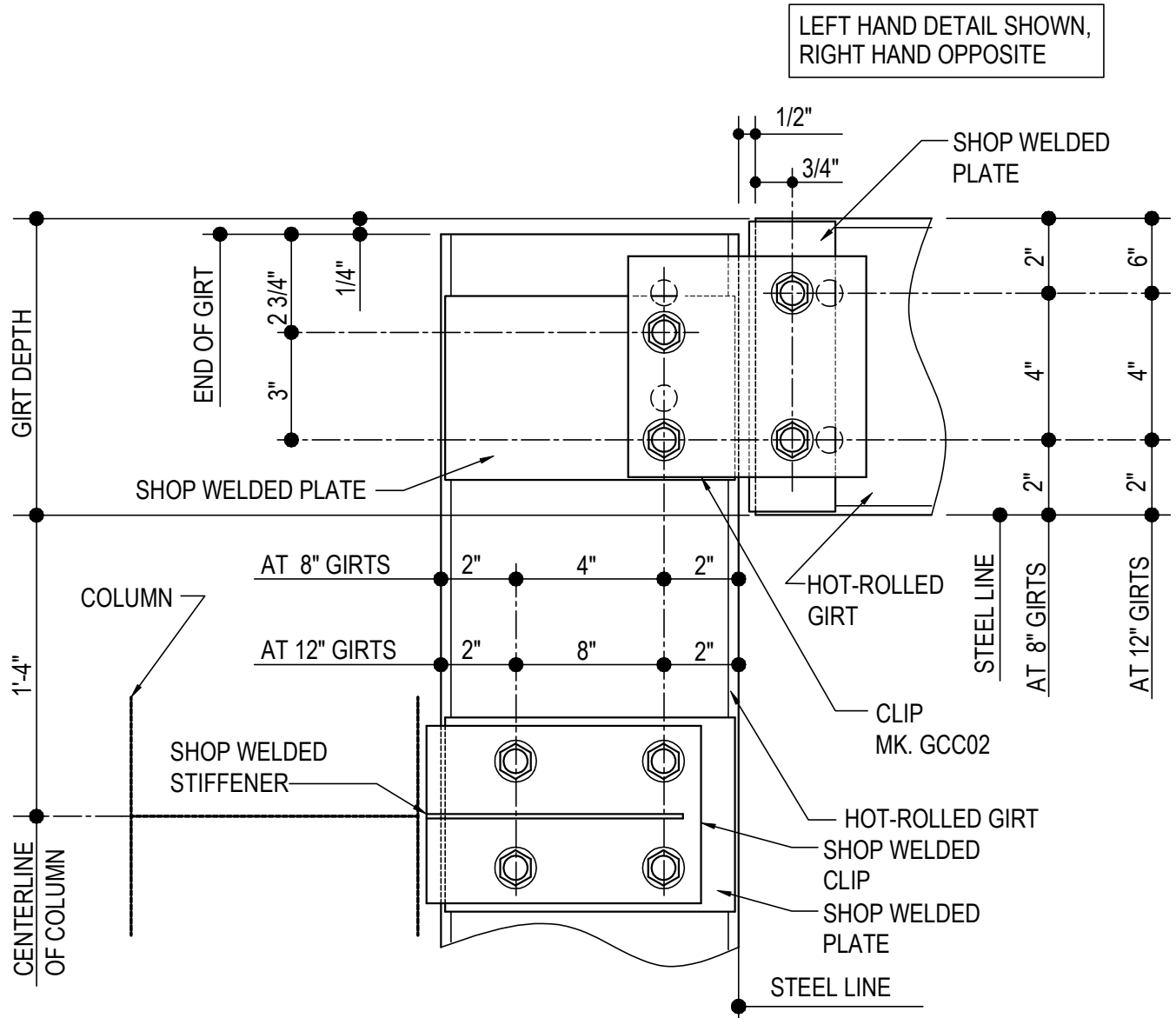
CJ1130

Detailer Notes:

- | | |
|---|---|
| 1) (4) HOLE WELDED CLIP TO COLUMN:
8" - PCU01
9 1/2" - GCB62
12" - GCB12 | 2) ADD STIFFENER PER DESIGN:
8" GIRT: WS_04
9 1/2" GIRT: WS_04
12" GIRT: WS_12 |
|---|---|

CJ1165 - HOT ROLLED GIRT INTO BYPASS GIRT

[Download the DWG file by clicking here.](#)



INSIDE CORNER GIRT DETAIL

HOT ROLLED GIRT INTO BYPASS GIRT

NOTE: USE (8) 1/2" x 1 1/4" A307 BOLTS H0500/NUTS H0400

REFERENCE STANDARD WASHER DETAIL FOR TYPICAL WASHER REQUIREMENTS

CJ1165

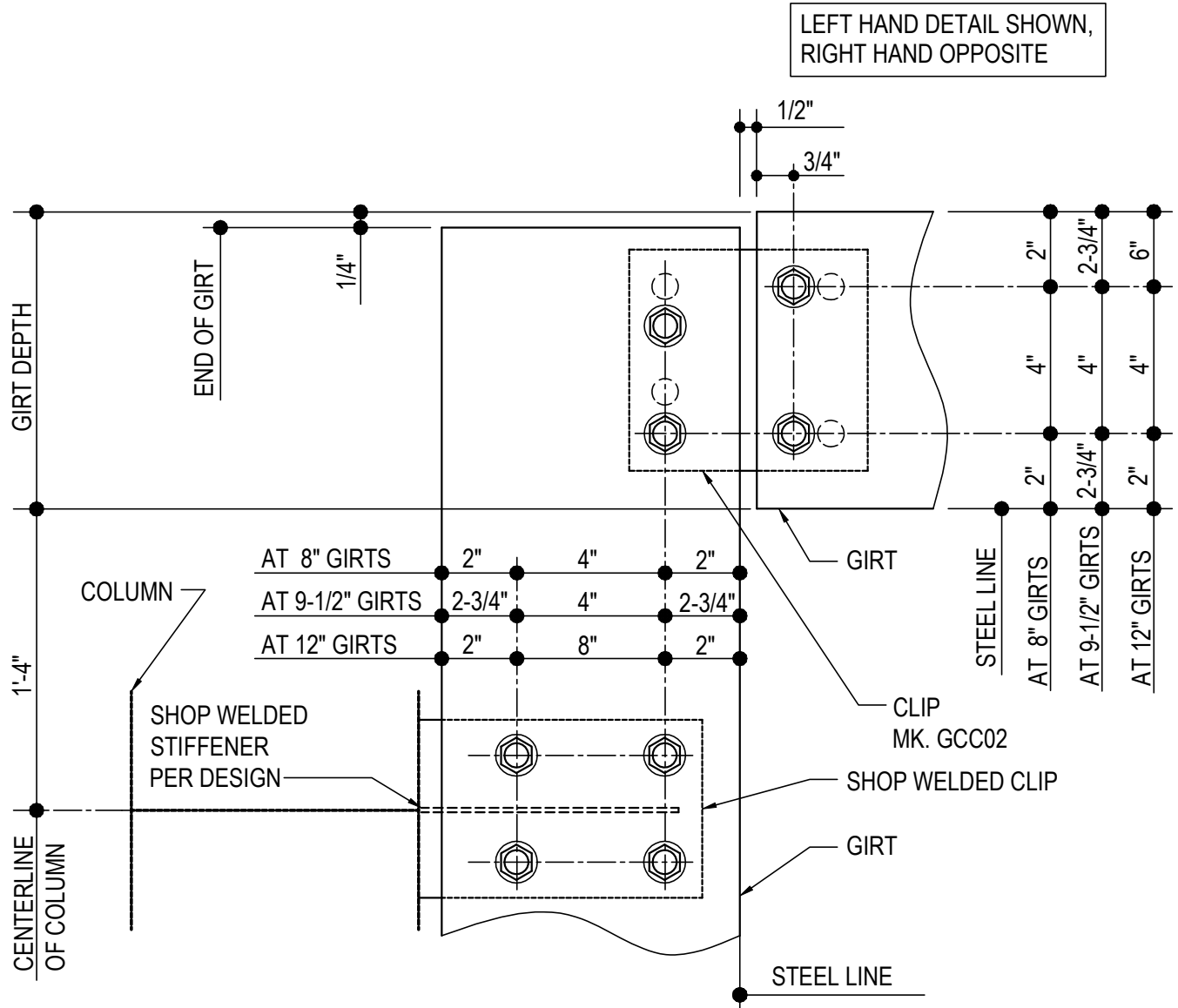
Detailer Notes:

- 1) (4) HOLE WELDED CLIP TO COLUMN:
8" - GCM04
12" - GCB12
- 2) (4) HOLE PLATE WELDED TO HR GIRT:
8" - HCD08 / 12" - HCD12

- 3) (2) HOLE WELDED CLIP TO HR GIRT:
8" - HCS08 / 12" - HCS12
- 4) SHOP WELDED STIFFENER:
8" - GCM04 STIFFENER: WS_04
12" - GCB12 STIFFENER: WS_12

CJ1170 - BYPASS GIRT INTO BYPASS GIRT

[Download the DWG file by clicking here.](#)



INSIDE CORNER GIRT DETAIL

BYPASS GIRT INTO BYPASS GIRT

NOTE: USE (8) 1/2" x 1 1/4" A307 BOLTS H0500/NUTS H0400

REFERENCE STANDARD WASHER DETAIL FOR TYPICAL WASHER REQUIREMENTS

CJ1170

Detailer Notes:

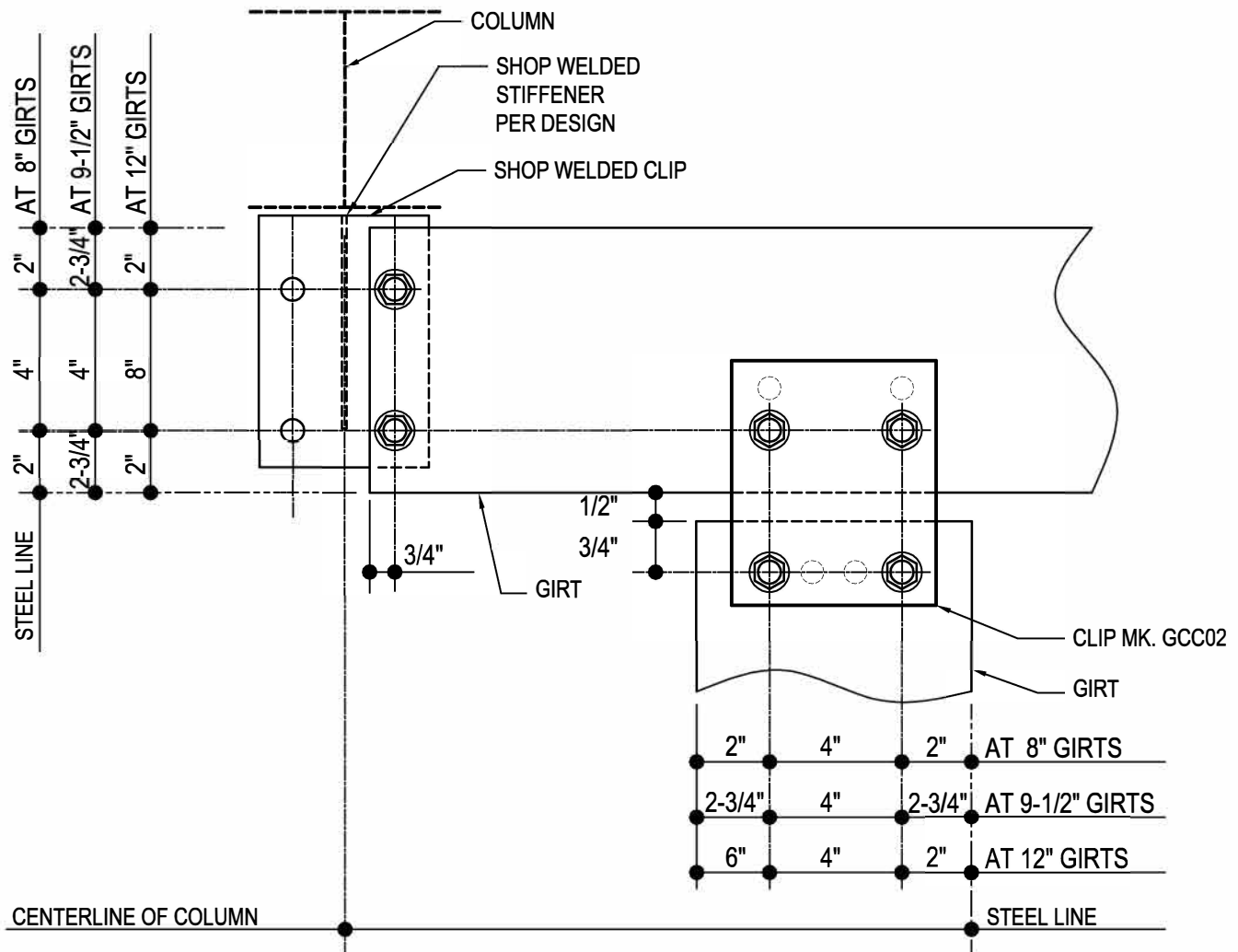
- 1) SHOP WELDED CLIP:
8" GIRT = PCU01
9-1/2" GIRT = GCB62
12" GIRT = GCB12

- 2) ADD STIFFENER PER DESIGN:
8" GIRT: WS_04
9 1/2" GIRT: WS_04
12" GIRT: WS_12

CJ1220 - BYPASS GIRT INTO BYPASS GIRT

[Download the DWG file by clicking here.](#)

RIGHT HAND DETAIL SHOWN,
LEFT HAND OPPOSITE



INSIDE CORNER GIRT DETAIL

BYPASS GIRT INTO BYPASS GIRT

NOTE: USE (6) 1/2" x 1 1/4" A307 BOLTS H0500/NUTS H0400

REFERENCE STANDARD WASHER DETAIL FOR TYPICAL WASHER REQUIREMENTS

CJ1220

Detailer Notes:

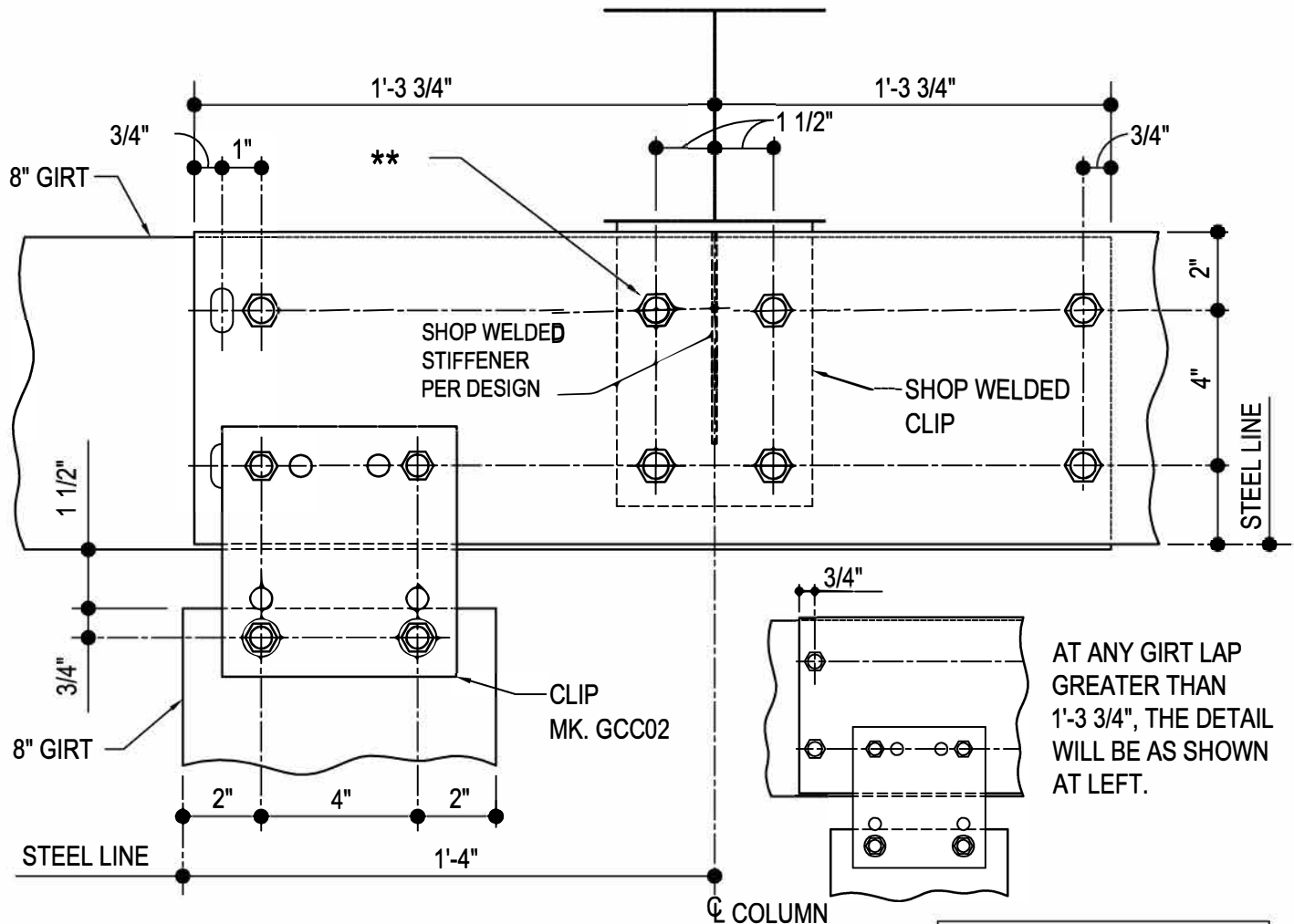
- 1) SHOP WELDED CLIP TO COLUMN:
 - 8" - PCU01
 - 9 1/2" - GCB62
 - 12" - GCB12

- 2) ADD STIFFENER PER DESIGN:
 - 8" GIRT: WS_04
 - 9 1/2" GIRT: WS_04
 - 12" GIRT: WS_12

CJ1500 - 8" LAPPED BYPASS GIRT AT 8" INSIDE CORNER GIRT

[Download the DWG file by clicking here.](#)

**** USE (1) 1/2" X 1 1/4" BUTTON HEAD BOLT H0510 / NUT H0400 AT THIS LOCATION. REFER TO THE "LAPPED GIRT DETAIL" FOR ADDITIONAL INFORMATION.**



INSIDE CORNER GIRT DETAIL

8" LAPPED BYPASS GIRT AT 8" INSIDE CORNER GIRT

NOTE: USE (11) 1/2" x 1 1/4" A307 BOLTS H0500/NUTS H0400

REFERENCE STANDARD WASHER DETAIL FOR TYPICAL WASHER REQUIREMENTS

LEFT HAND DETAIL SHOWN,
RIGHT HAND OPPOSITE

CJ1500

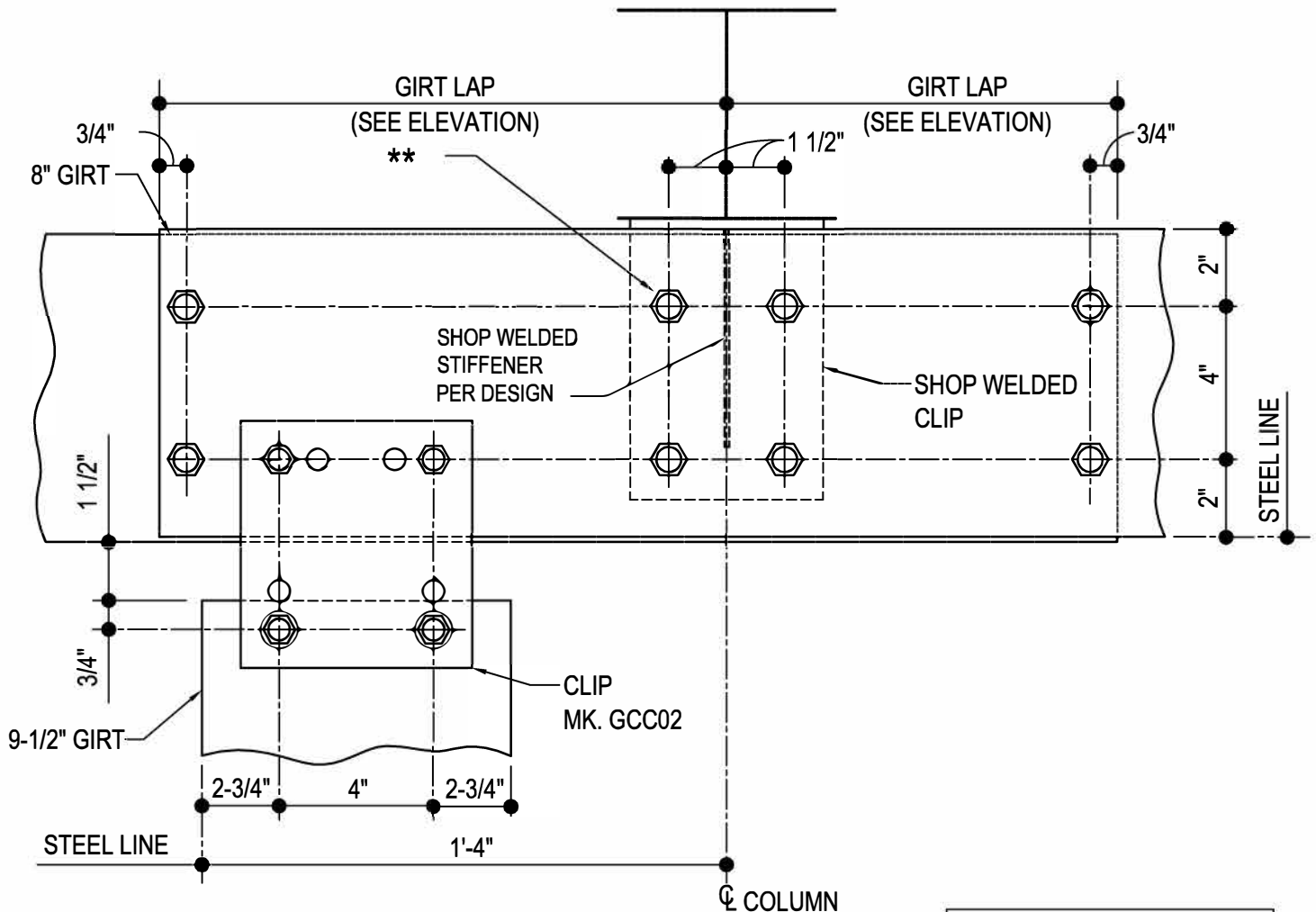
Detailer Notes:

- 1) SHOP WELDED CLIP: 8" GIRT = PCU01
- 2) ADD STIFFENER PER DESIGN: WS_04

CJ1520 - 8" LAPPED BYPASS GIRT AT 9-1/2" INSIDE CORNER GIRT (SHOP WELDED CLIP)

[Download the DWG file by clicking here.](#)

**** USE (1) 1/2" X 1 1/4" BUTTON HEAD BOLT H0510 / NUT H0400 AT THIS LOCATION. REFER TO THE "LAPPED GIRT DETAIL" FOR ADDITIONAL INFORMATION.**



INSIDE CORNER GIRT DETAIL

LEFT HAND DETAIL SHOWN,
RIGHT HAND OPPOSITE

8" LAPPED BYPASS GIRT AT 9-1/2" INSIDE CORNER GIRT

NOTE: USE (11) 1/2" x 1 1/4" A307 BOLTS H0500/NUTS H0400

REFERENCE STANDARD WASHER DETAIL FOR TYPICAL WASHER REQUIREMENTS

CJ1520

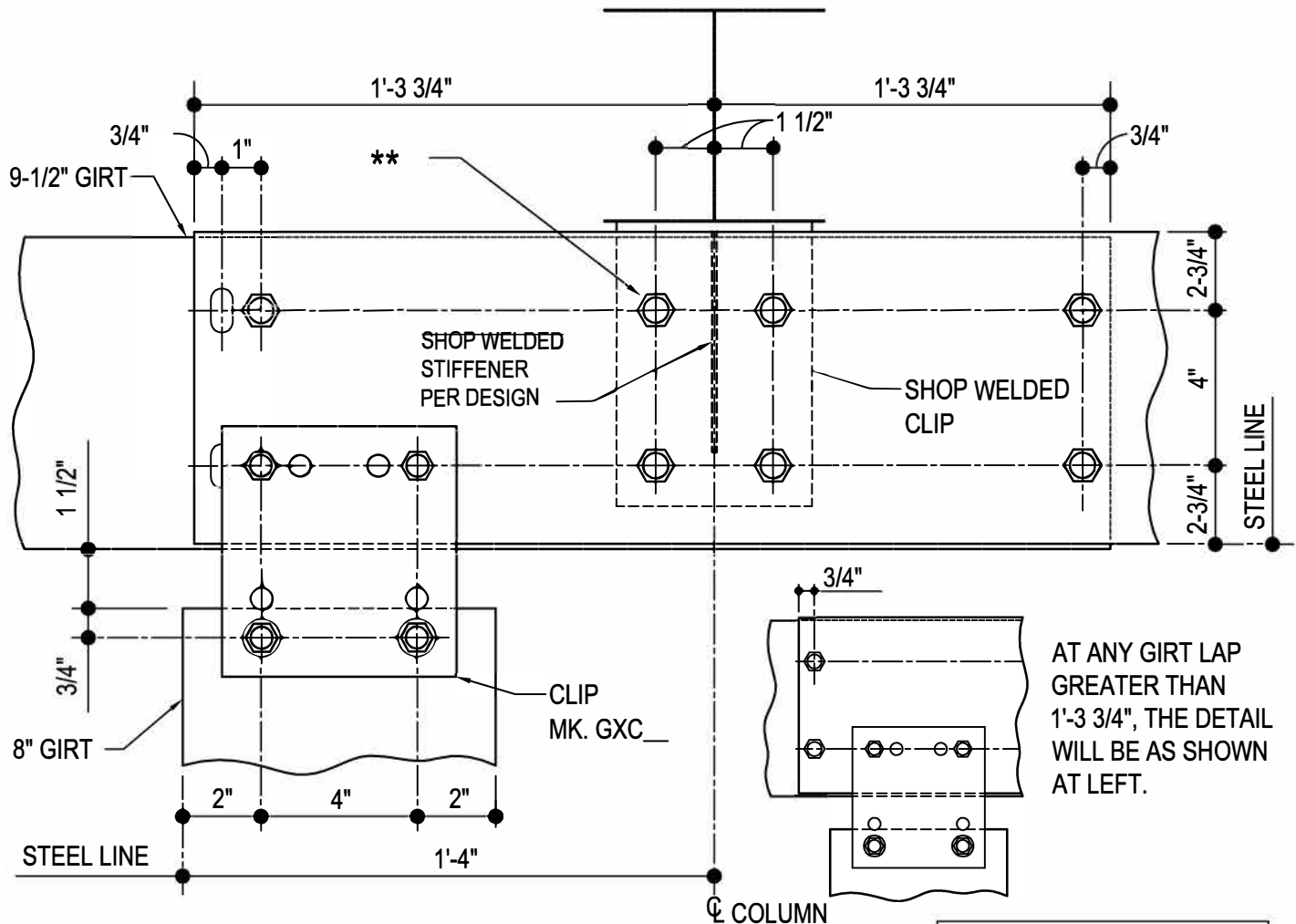
Detailer Notes:

- 1) SHOP WELDED CLIP: 8" GIRT = PCU01
- 2) ADD STIFFENER PER DESIGN: WS_04

CJ1540 - 9-1/2" LAPPED BYPASS GIRT AT 8" INSIDE CORNER GIRT (SHOP WELDED CLIP)

[Download the DWG file by clicking here.](#)

**** USE (1) 1/2" X 1 1/4" BUTTON HEAD BOLT H0510 / NUT H0400 AT THIS LOCATION. REFER TO THE "LAPPED GIRT DETAIL" FOR ADDITIONAL INFORMATION.**



INSIDE CORNER GIRT DETAIL

9-1/2" LAPPED BYPASS GIRT AT 8" INSIDE CORNER GIRT

NOTE: USE (11) 1/2" x 1 1/4" A307 BOLTS H0500/NUTS H0400

REFERENCE STANDARD WASHER DETAIL FOR TYPICAL WASHER REQUIREMENTS

LEFT HAND DETAIL SHOWN,
RIGHT HAND OPPOSITE

CJ1540

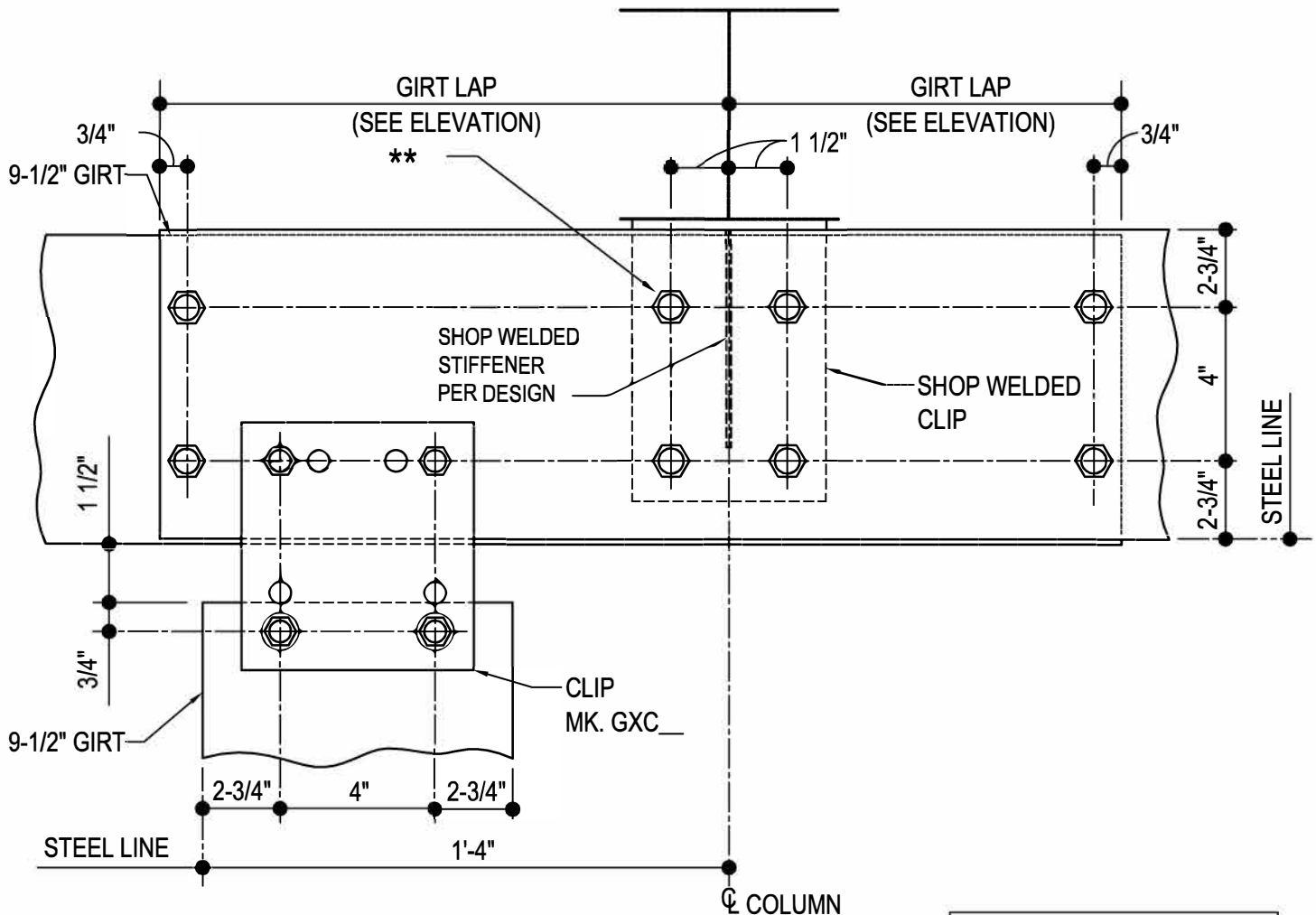
Detailer Notes:

- 1) SHOP WELDED CLIP: 9-1/2" GIRT = GCB62
- 2) ADD STIFFENER PER DESIGN: WS_04

CJ1560 - 9-1/2" LAPPED BYPASS GIRT AT 9-1/2" INSIDE CORNER GIRT (SHOP WELDED CLIP)

[Download the DWG file by clicking here.](#)

**** USE (1) 1/2" X 1 1/4" BUTTON HEAD BOLT H0510 / NUT H0400 AT THIS LOCATION. REFER TO THE "LAPPED GIRT DETAIL" FOR ADDITIONAL INFORMATION.**



INSIDE CORNER GIRT DETAIL

LEFT HAND DETAIL SHOWN,
RIGHT HAND OPPOSITE

9-1/2" LAPPED BYPASS GIRT AT 9-1/2" INSIDE CORNER GIRT

NOTE: USE (11) 1/2" x 1 1/4" A307 BOLTS H0500/NUTS H0400

REFERENCE STANDARD WASHER DETAIL FOR TYPICAL WASHER REQUIREMENTS

CJ1560

Detailer Notes:

- 1) SHOP WELDED CLIP: 9-1/2" GIRT = GCB62
- 2) ADD STIFFENER PER DESIGN: WS_04